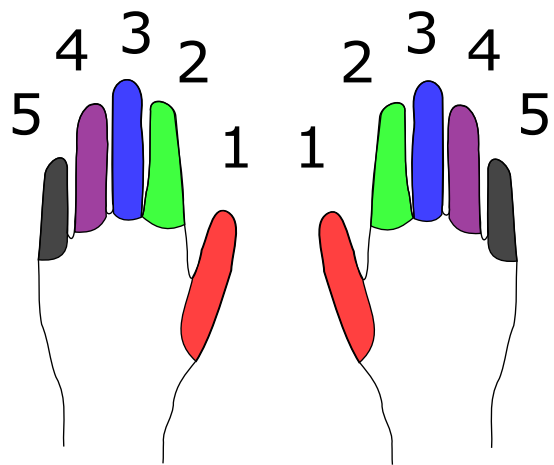
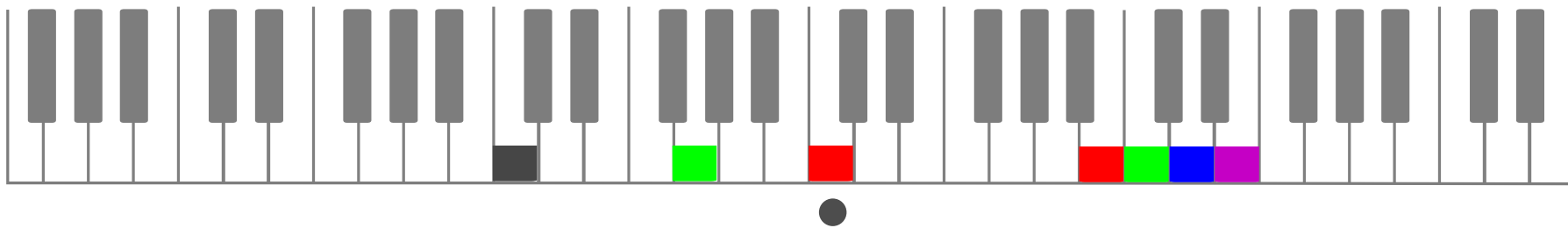
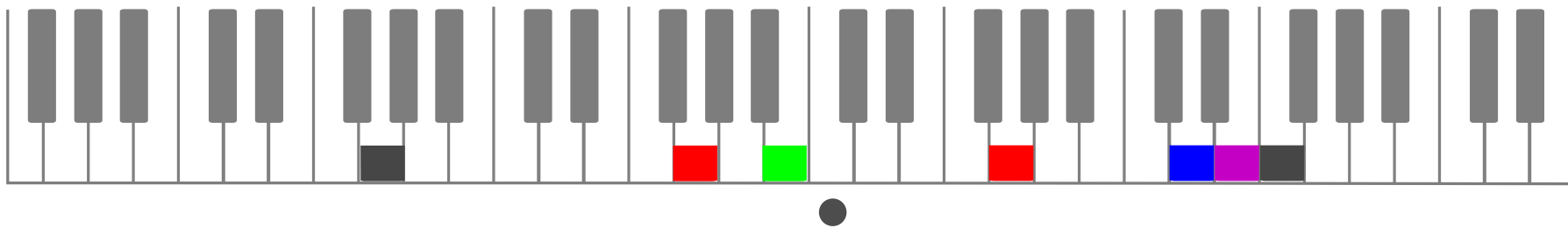
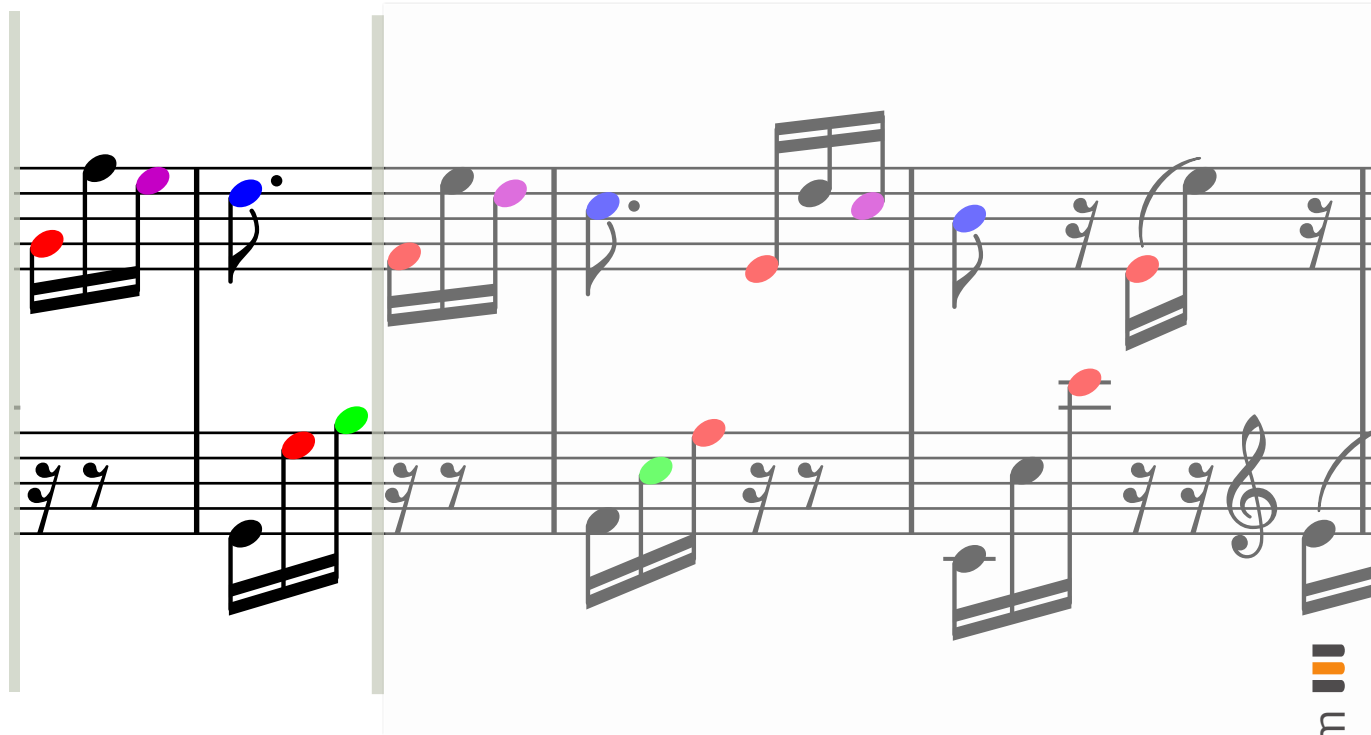
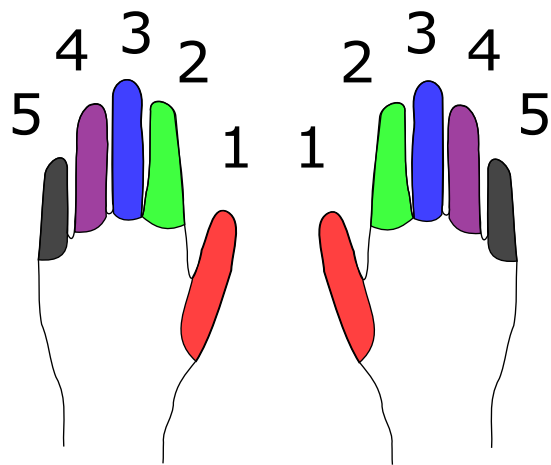


1

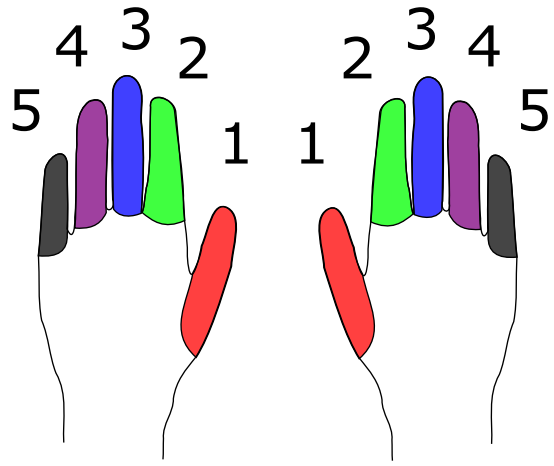


Musical notation for piano, showing two staves (treble and bass clefs). The notation includes notes with colored stems (red, green, blue, purple) and a repeat sign. The notes are: Treble clef: G4 (red), A4 (green), B4 (blue), C5 (purple), B4 (purple), A4 (purple), G4 (purple), F4 (purple), E4 (purple), D4 (purple), C4 (purple). Bass clef: C4 (black), D4 (black), E4 (black), F4 (black), G4 (black), A4 (black), B4 (black), C5 (green), B4 (red), A4 (green), G4 (red), F4 (green), E4 (black), D4 (black), C4 (black).

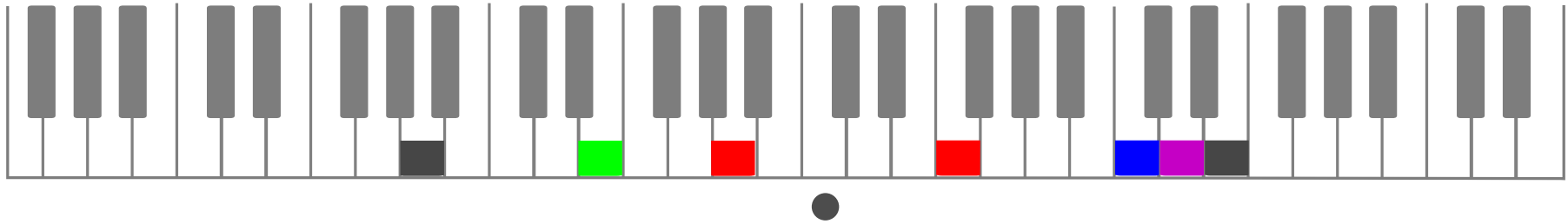




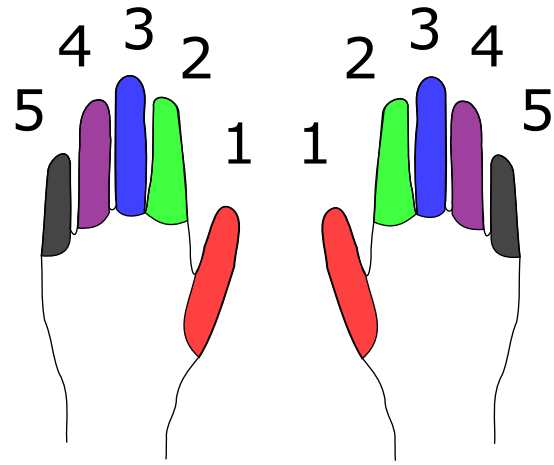
3



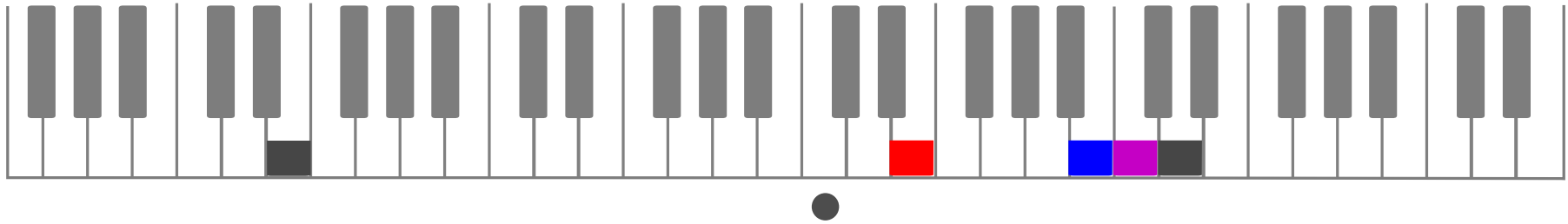
Musical notation for a triplet in bass and treble clefs. The bass clef has notes G4 (red), F4 (purple), E4 (blue), and D4 (black). The treble clef has notes G4 (red), F4 (purple), E4 (blue), and D4 (black). The notes are grouped by a brace and a '3' above them. The treble clef also has a sharp sign for F#4.

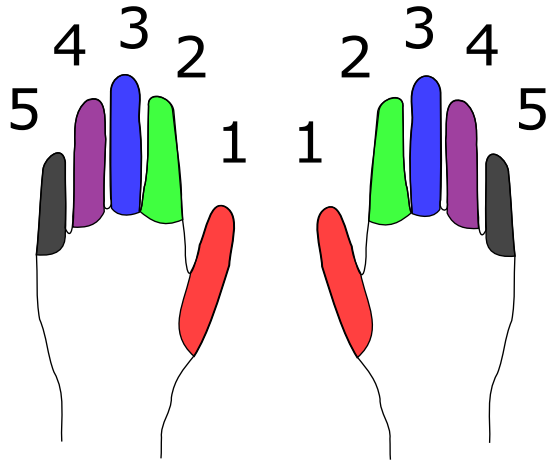


4

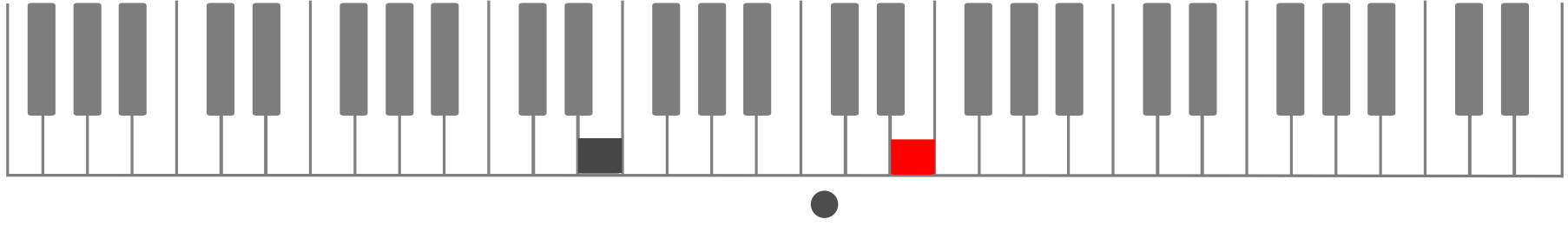


Musical notation for a piano exercise in 3/4 time. The exercise is presented in two systems of staves. The first system shows a treble clef staff with a sequence of notes: a quarter note (red), a quarter note (blue), and a quarter note (red). The second system shows a bass clef staff with a sequence of notes: a quarter note (red), a quarter note (blue), and a quarter note (red). The notation includes various note values and accidentals (sharps and naturals) to indicate the specific pitch and rhythm of each note.

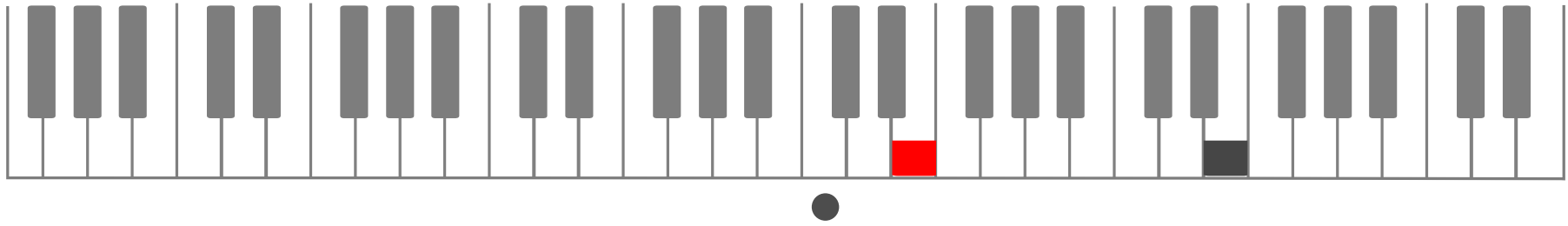
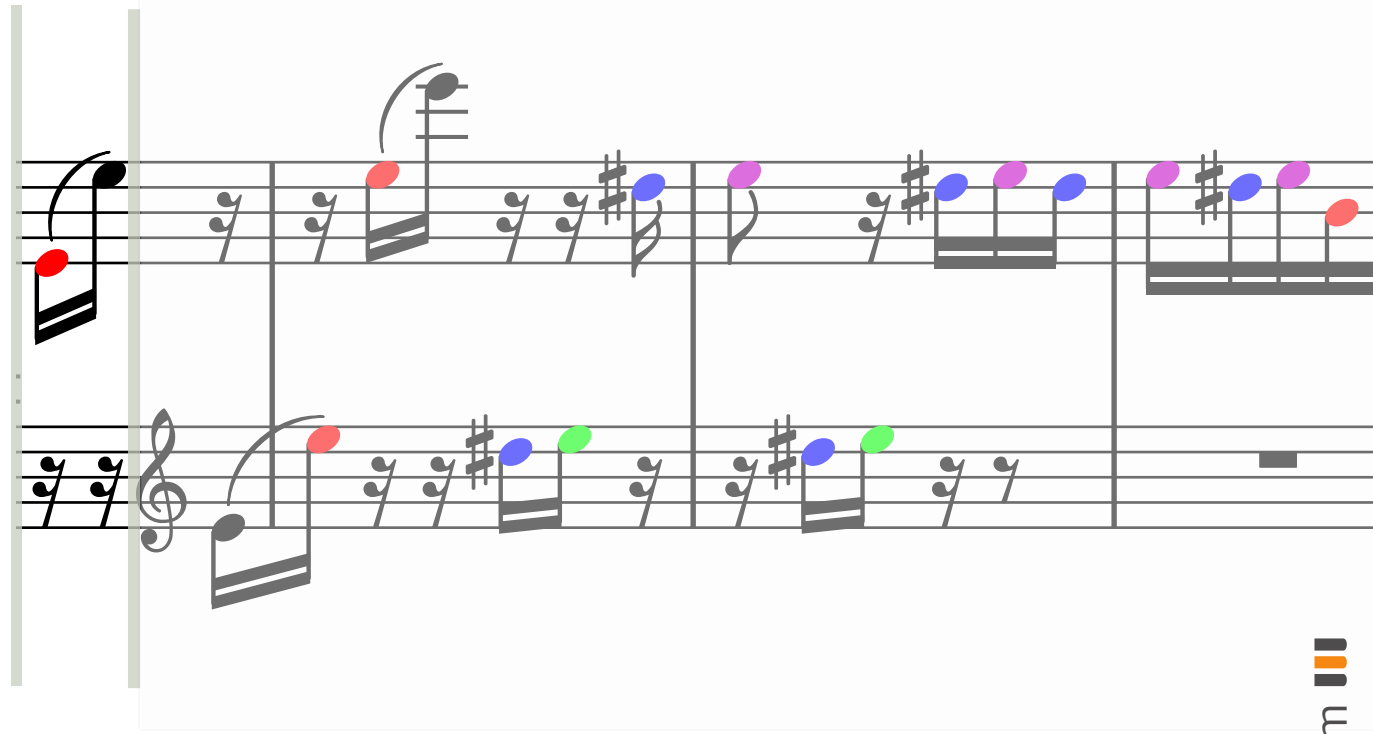
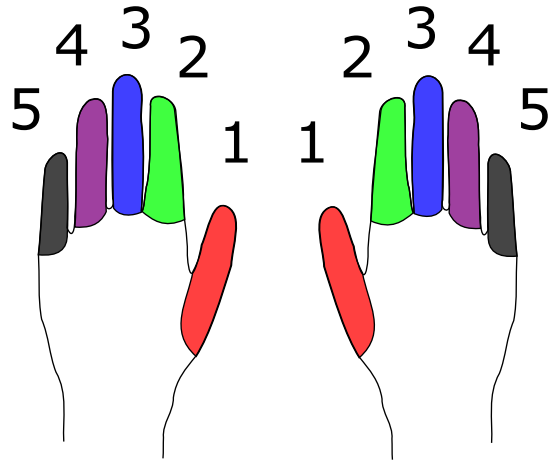




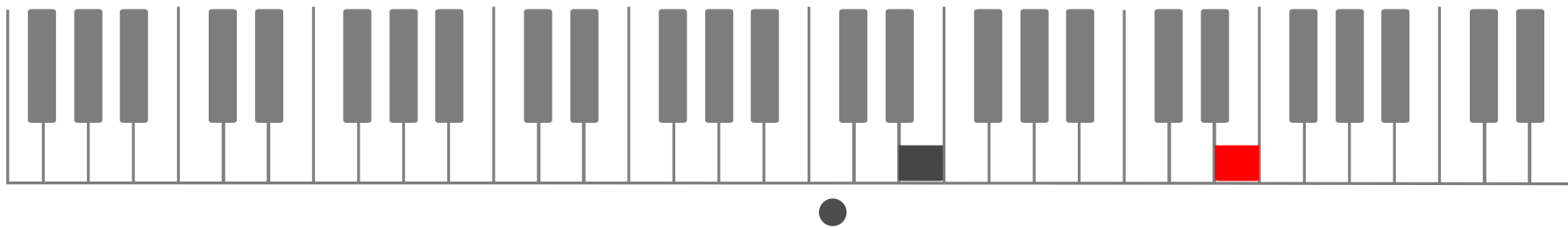
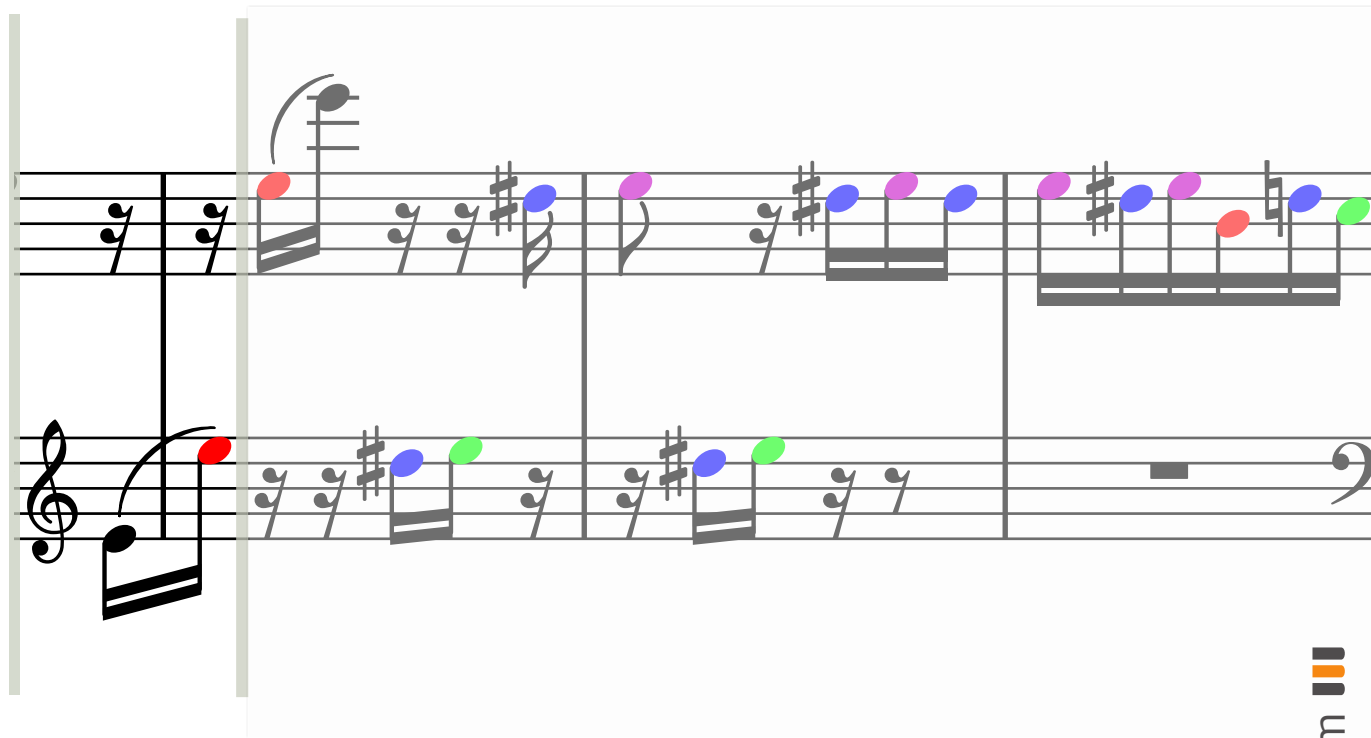
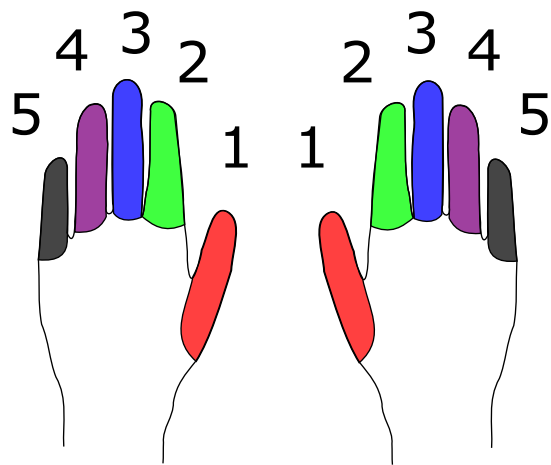
Musical notation for a piano exercise in D major, 4/4 time. The piece consists of two staves. The right hand part starts with a quarter rest, followed by quarter notes G4, A4, B4, and C5. The left hand part starts with a quarter note G3, followed by quarter notes A3, B3, and C4. The key signature has two sharps (F# and C#). The notation includes various note values, rests, and accidentals.

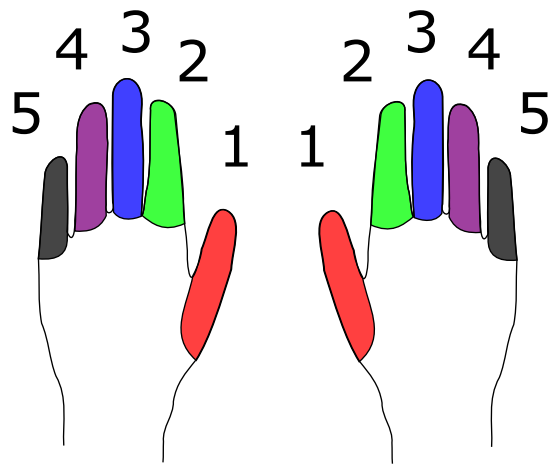


6

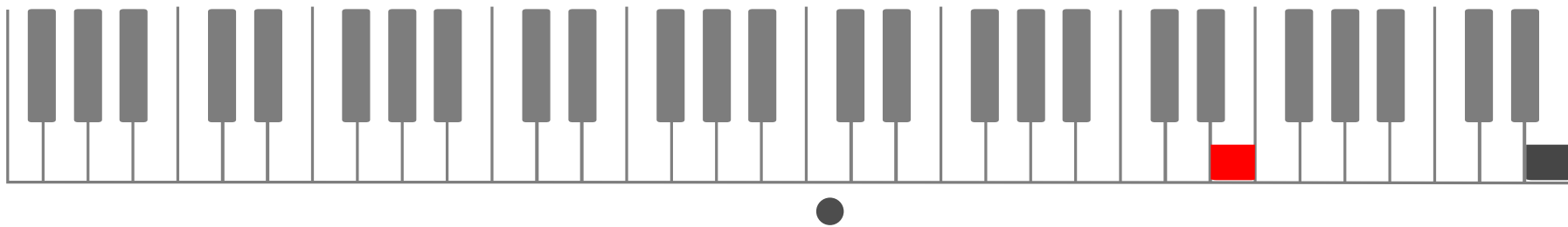


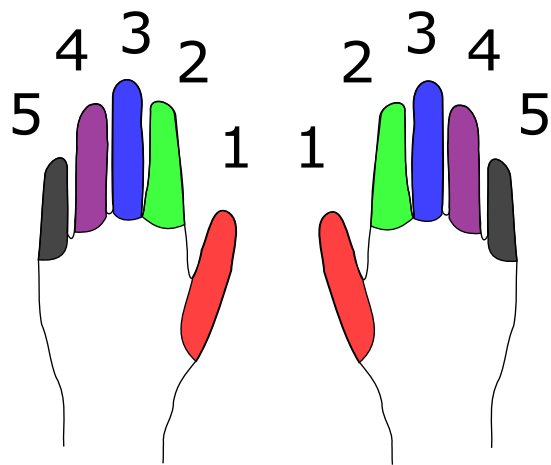
7



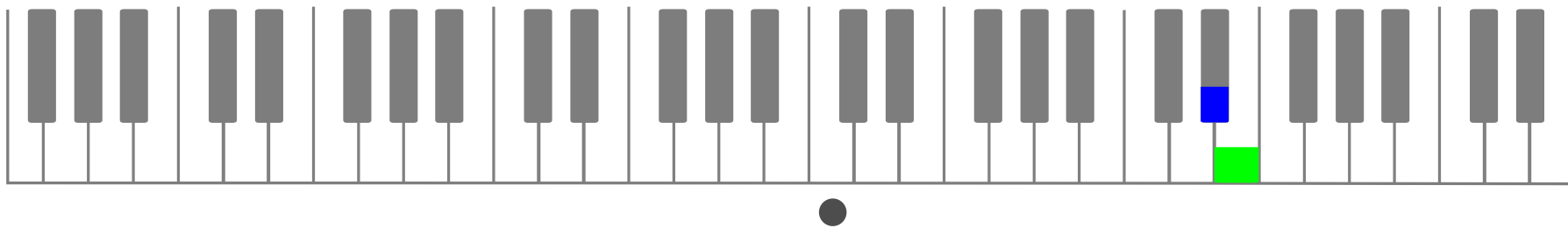


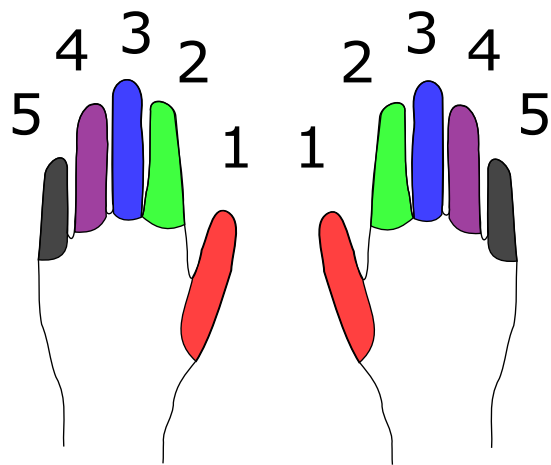
Musical notation for an 8-measure exercise. The notation is written on two staves (treble and bass clef). The notes are colored to match the finger numbers: 1 (red), 2 (purple), 3 (blue), 4 (green), and 5 (black). The exercise is in 4/4 time and features a key signature of one sharp (F#).



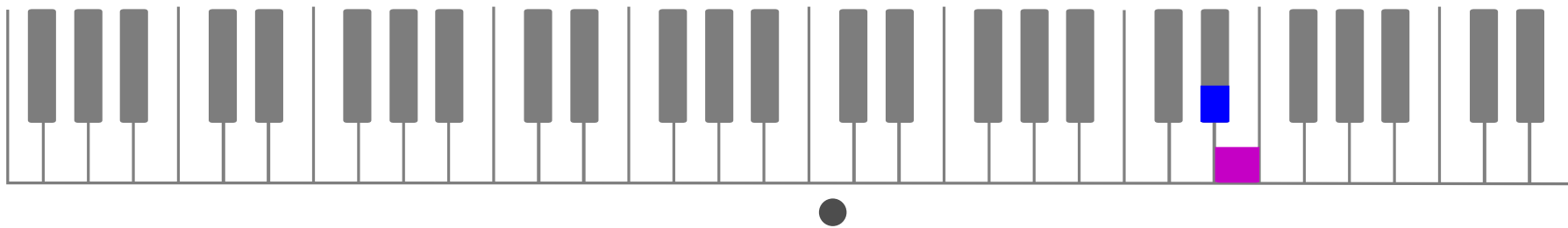


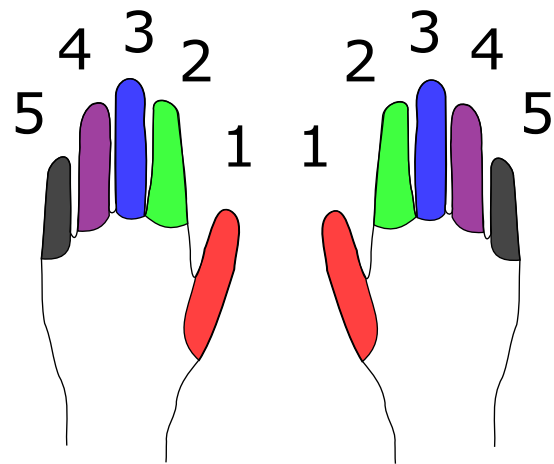
Musical score for piano, showing two staves (treble and bass clef) with notes and rests. The notes are color-coded to match the finger diagrams: blue (finger 3), green (finger 4), red (finger 1), purple (finger 2), and black (finger 5). The score includes a key signature of one sharp (F#) and a time signature of 3/4. A vertical line is drawn through the score, indicating a specific point in the piece.



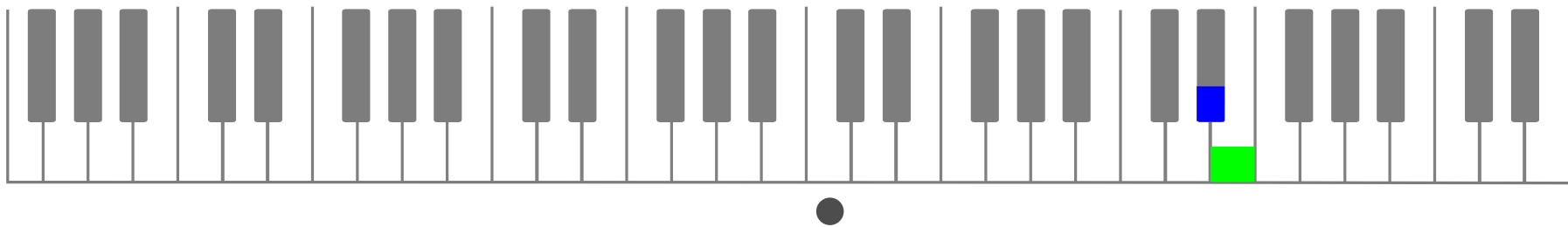


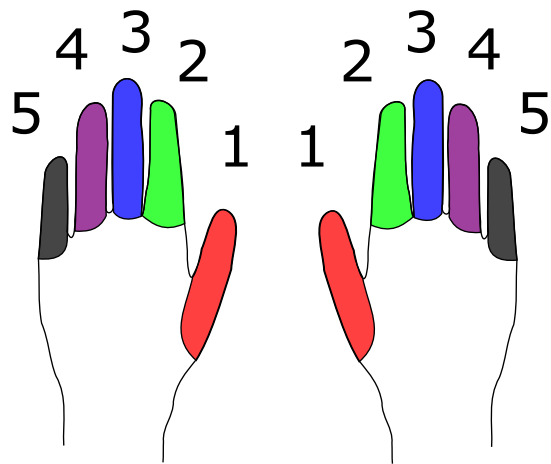
Musical notation for piano, showing two staves (treble and bass clef) with notes and rests. The notes are color-coded: blue, pink, green, and red. The notation includes a key signature of one sharp (F#) and a time signature of 2/4. The piece is divided into measures by vertical bar lines.





A musical score for piano, consisting of two staves. The top staff is in treble clef and the bottom staff is in bass clef. The key signature has one sharp (F#). The score includes various musical notations such as notes, rests, and bar lines. Colored dots (blue, purple, pink, red, green) are placed above specific notes in the treble staff to indicate fingerings. The score is divided into two measures by a vertical line.





Musical notation for an 8-measure sequence. The notation is written on two staves (treble and bass clef). The key signature is one sharp (F#). The sequence is divided into two 4-measure phrases by vertical lines. The first phrase consists of two measures of chords in the treble clef. The second phrase consists of two measures of chords in the bass clef. The notes are color-coded to match the finger diagrams: red (1), purple (2), blue (3), green (4), and black (5).

